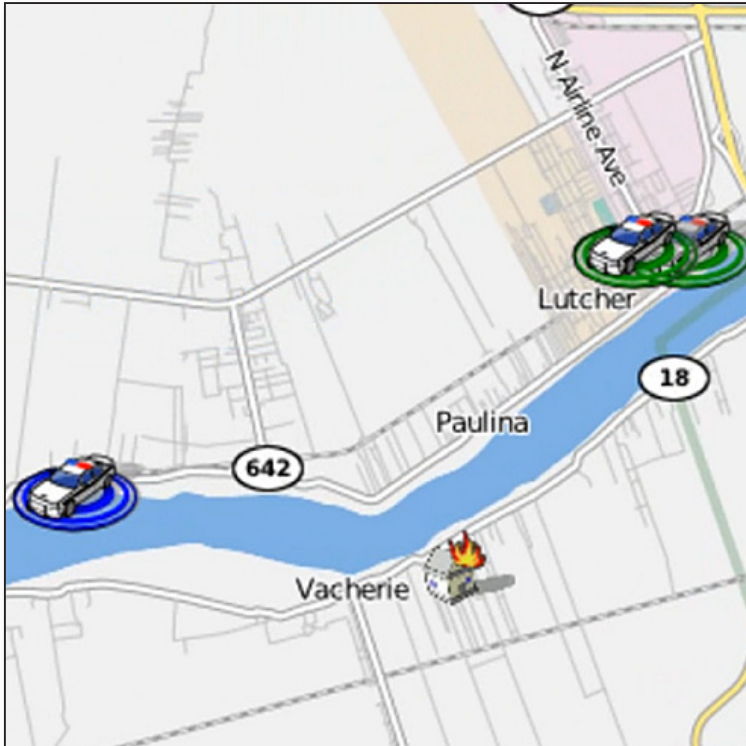


THINKSTREAM



All the CAD You Need



Are your dispatchers still using pencils, paper and radios? Or an outmoded Computer-Aided Dispatch system that's too expensive to replace? Or perhaps your agency has been farming out dispatch to a larger one? Well, those days are over, because now there's a fully loaded CAD solution – complete with advanced mapping capabilities and full CAD integration – that your agency can readily afford.

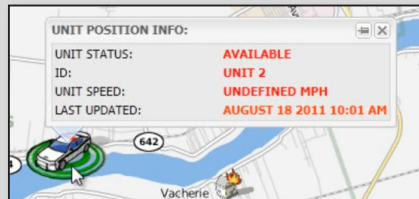
It's all here: Map-based visual tracking for units and incidents, in real time. Active calls, current vehicle position and status, previous vehicle positions, all on one page. Finally your dispatchers can see the big picture and act – and react – accordingly to manage your agency's resources the way they ideally should.

There's even a mobile component that provides for direct messaging among units in the field, as well as between units and the Dispatch Center – leaving precious radio channels available for use in addressing the most severe or time-sensitive issues and events. Better communication, with fewer bottlenecks, means your agency is more responsive and more effective.

What more could you ask for?

Working with All the CAD You Need

All the CAD You Need enables dispatchers to take service calls from the public and track those calls from beginning to end through a graphical user interface that's remarkably easy to learn and use – the training curve for new users is minimal, and any personnel who are at all familiar with CAD will be up and running in half an hour or so.



Description	Status	Status Updated	Current Call
Unit 1	Available	08/18/2011 14:49	
Unit 2	EnRoute	08/19/2011 12:24	STJ-11-000013
Unit 3	Available	08/18/2011 09:03	

Map-based visual tracking, in real time, with every vehicle and every call on one page, literally gives dispatchers the big picture, prioritizing and reprioritizing calls – even active calls – according to demand. An "Active" call, if it has a lower priority than a call just coming in, can be redefined as "Pending" to ensure that units and staff are always attending to the highest priority calls.



Features of **All the CAD You Need**

Map-Based Visual Tracking – Unit and incident status updates are displayed in real time, so you always know where your resources are. Geospatial coordinates enable more accurate tracking than simple text address can provide.

Ideal for Small-to-Medium Sized Agencies – Supports over 20 open calls and 45 vehicles simultaneously without noticeable performance lag.

Digitally Captured and Stored Call Records – Enables replay and review of historical calls by accident or incident type and facilitates internal auditing and analysis of service demands. Creates reports whenever you need them.

Configurable Dispatcher Alarm – Alerts dispatcher when a call has been "Pending" for an excessive amount of time – can be configured to adhere to legal or policy changes.

Mobile Component – Enables direct messaging between units and between units and Dispatch Center to facilitate communication agency-wide while freeing up precious radio channels. Provides individual officer with access to all calls he or she has participated in, with the ability to obtain a history of the day and update details as time permits. Automated Field Data Copy eliminates retyping and reduces data entry errors.

Single Sign-On – Logs dispatchers into all applications at once. Provides access to any function without having to log on to the application that manages it.

Scalable and Cost-Efficient – Our solution works with what you have, so there's no need to replace the equipment you've already paid for. And extensions don't require significant reprogramming – modular software means adding capacity is not a major project.

About **THINKSTREAM**

In little more than a decade, Thinkstream has emerged as a proven leader in the creation and expansion of distributed information networks that provide communication and interoperability to the nation's public safety and criminal justice agencies, while also assisting banks and businesses with fraud detection and prevention. We have developed and marketed a series of solutions and products that tie agencies, branches or offices together – securely – and enable them to rapidly share critical information across organizational, agency and geographic boundaries.

Everything is built around our Distributed Information integration Platform, a robust

and highly scalable framework for the development of integrated systems. This patent-pending platform is an evolutionary step forward from previous technologies that require drastic change or even replacement of existing systems – an expensive, risky and time consuming process. In lieu of altering or replacing these existing systems, Thinkstream extends them into an efficient, cost-effective network that's surprisingly easy to use.

Our networks deliver reusable, flexible, real-time views of information that is scattered amongst myriad databases, Web sites and desktop PCs. Powered by the Thinkstream Platform, our networks can scale to

encompass hundreds or even thousands of information systems.

Thinkstream has the only technology on the market that can enable integrated criminal justice throughout entire state, multi-state or even nationwide networks. Similarly, it is the only technology available that can provide instant, up-to-date identity verification that is 100% accurate. The company is currently operating the Louisiana Civil and Criminal Information Network, considered to be the largest of its kind in the nation. Thinkstream is an active member of the Internet Working Group for Justice Integration Committee, established by the U.S. Department of Justice.

Call us for product and pricing information.



6146 Crestmount Drive ■ Baton Rouge, LA 70809
Tel: 225-291-5440 ■ Fax: 225-291-9141
www.thinkstream.com